

CHAPTER 60

VACATE CHESTNUT STREET

WYALUSING BOROUGH
ORDINANCE NO. 60

AN ORDINANCE PROVIDING FOR THE VACATION OF AN UNOPENED CHESTNUT STREET BETWEEN FIFTH STREET AND THIRD STREET AND THE VACATION OF AN UNOPENED FOURTH STREET BETWEEN STATE STREET AND RIVERSIDE DRIVE.

Said unopened Chestnut Street is bounded on the North by Fifth Street, on the East by Tuscarora Wayne Insurance, James A. Smith and Kathy S. Smith, Sonya D. Heeman, and Hallock Shannon, PC on the South by Third Street, on the west by Tuscarora Wayne Insurance and to be vacated Fourth Street and Tuscarora Wayne Insurance.

Said unopened Fourth Street is bound on North by Jeffrey G. Sharer and Louise A. Sharer, Tuscarora Wayne Insurance, previously vacated Walnut Street, Tuscarora Wayne Insurance, unopened Chestnut Street and Tuscarora Wayne Insurance, on the east by State Street on the South by Tuscarora Wayne Insurance unopened Chestnut Street, Tuscarora Wayne Insurance vacated Walnut Street, Tuscarora Wayne Insurance and Jeffrey G. Sharer and Louise A. Sharer property on the west by Riverside Drive.

CONTAINING AN UNOPENED CHESTNUT STREET 32 FEET, MORE OR LESS, IN WIDTH RUNNING FROM FIFTH STREET SOUTH TO THIRD STREET A DISTANCE OF 830 FEET IN LENGTH, AND DIRECTING THAT THE SAME BE STRICKEN FROM THE OFFICIAL BOROUGH PLAN IF IT IS IN FACT LOCATED ON ANY BOROUGH PLAN OR BOROUGH MAP.

CONTAINING AN UNOPENED FOURTH STREET 32 FEET, MORE OR LESS, IN WIDTH RUNNING FROM RIVERSIDE DRIVE EAST TO STATE STREET A DISTANCE OF 950 FEET IN LENGTH AND DIRECTING THAT THE SAME BE STRICKEN FROM THE OFFICIAL BOROUGH PLAN IF IT IS IN FACT LOCATED ON ANY BOROUGH PLAN AND/OR BOROUGH MAP.

Whereas, the following property owners in the Borough of Wyalusing that abut the aforesaid unopened Chestnut Street and aforesaid unopened Fourth Street were notified of said Ordinance:

60-114.03-56 – Tuscarora Wayne Insurance

60-114.03-31 – Tuscarora Wayne Insurance

60-114.03-58 – James A. Smith and Kathy Smith

60-114.03-59 – Sonya D. Heeman

60-114.03-60 – Sonya D. Heeman

60-114.03-61 – Francis X. Melly, Owner

60-114.03-61 – Hallock Shannon, PC, Tenant

60-114.03-48 – Jeffrey G. Sharer and Louise A. Sharer

WHEREAS, the members of the Wyalusing Borough Council deem it expedient for the public good to vacate the portion of said streets as herein described.

SECTION I:

Therefore, be it ordained and enacted by the Council of the Borough of Wyalusing, all that certain lot, piece or parcel of land, situate, lying and being in the Borough of Wyalusing, County of Bradford and the Commonwealth of Pennsylvania, bounded and described as follows:

Unopened Fourth Street:

Beginning at a point on Riverside Drive on the Northern boundary of the Jeffrey G. Sharer and Louise A. Sharer, where it intersects Riverside Drive, a distance of 218.42 feet more or less. Thence east across the Tuscarora Wayne Insurance property a distance of 138.647 to a point, thence 627.543 to a point, thence 136.377 feet (representing the distance 950 more or less) to State Street. Thence South 32 feet more or less along State Street. Thence West a distance of 136.377 to a point, 627.543 to a point, thence 138.647 to a point (representing the distance 950 more or less) of feet through the Tuscarora Wayne Insurance to the Jeffrey G. Sharer property then 218.42 feet across the Jeffrey G. Sharer property to the East side of Riverside Drive thence North 32 feet more or less along Riverside Drive to the point and place of beginning representing unopened Chestnut Street as set forth in Riverview Heights Development for Wyalusing, Pennsylvania recorded on July 18, 1911 in the Register and Records Office of Bradford County, Pennsylvania in Book of Maps Volume 1 at page 87 and a parcel map prepared by the Bradford County Assessment Office identifying the location of unopened street to be vacated.

Unopened Chestnut Street:

Beginning at a point 595.543 feet more or less from the Eastern boundary of unopened Walnut Street, thence South along the lands of Tuscarora Wayne Insurance a distance of 39.398 feet to a point, thence 93.557 feet to a point, thence 51.061 to a point, thence 137.981 to a point, thence 31.020 to a point, thence 134.651 to a point, thence 64.927 to a point, thence 65.879 to a point, thence 212.00 (representing the distance of 830 more or less) to the North line of Third Street. Thence 32 feet East along the Southern

boundary of Third Street to a point, thence North along the lands of Hallock Shannon, PC, a distance of 50 feet, thence North along the lands of Sonya D. Heeman a distance of 50 feet, thence along the lands of Sonya D. Heeman a distance of 50 feet, thence along the lands of James A. Smith and Kathy S. Smith a distance of 150 feet, thence along the lands of Tuscarora Wayne Insurance a distance of 530 feet more or less to Fifth Street, thence West 32 feet to the point and place of the beginning representing unopened Chestnut Street as set forth in Riverview Heights Development for Wyalusing, Pennsylvania recorded on July 18, 1911 in the Register and Recorders Office of Bradford County, Pennsylvania in Book of Maps Volume 1 at page 87 and a parcel map prepared by the Bradford County Assessment Office identifying the location of unopened street to be vacated.

SECTION II:

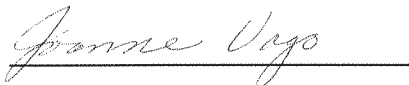
All ordinances or parts of ordinances conflicting with the provisions of this ordinance shall be repealed.

This ordinance will become effective thirty (30) days after enactment.



Josh Kilmer, President

ATTEST:



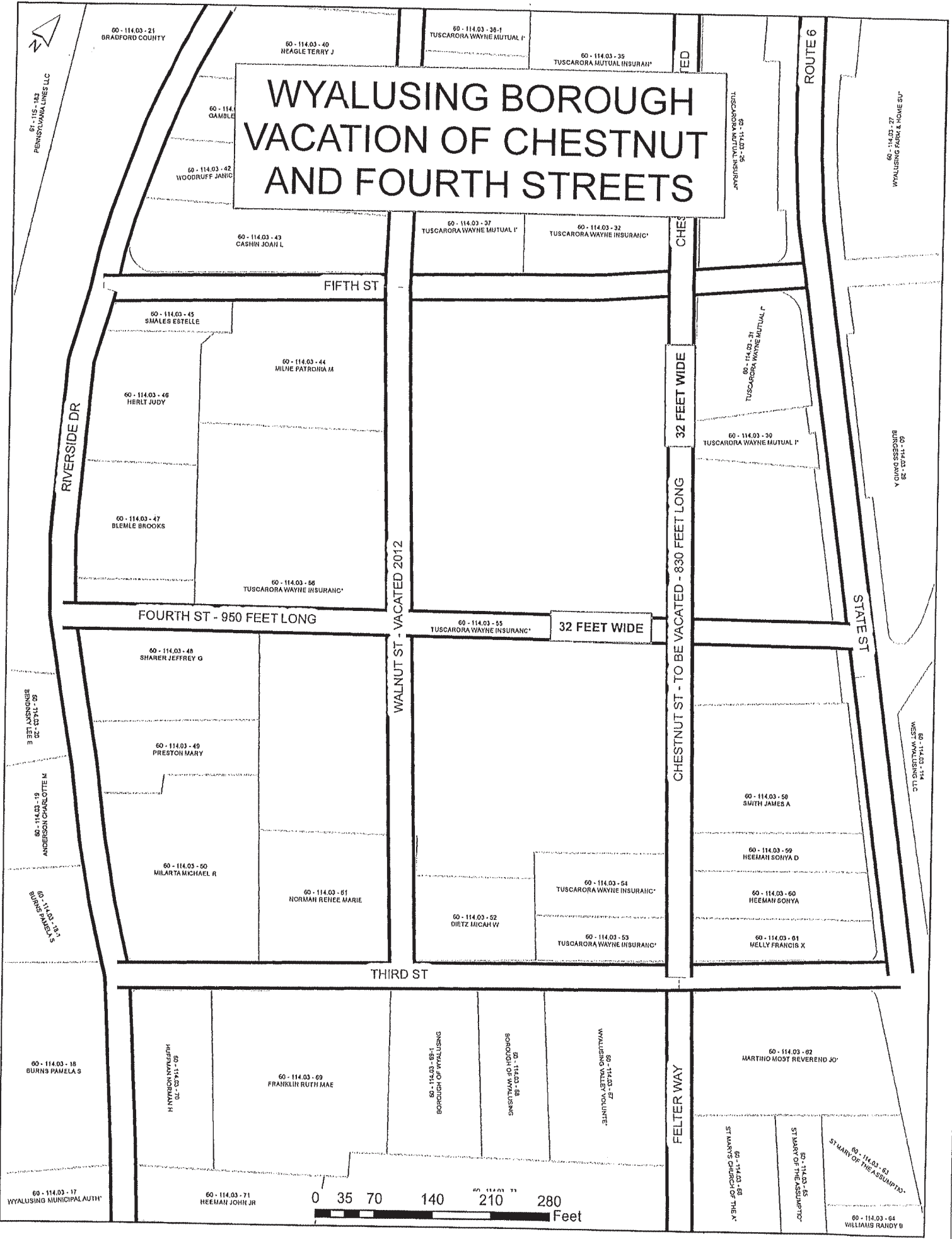
Joanne Vago, Secretary

APPROVED THIS 31st DAY OF January, 2018.

Susan Burgess, Mayor



WYALUSING BOROUGH VACATION OF CHESTNUT AND FOURTH STREETS



60-114.03-21
BRADFORD COUNTY

60-114.03-40
NEAGLE TERRY J

60-114.03-36-1
TUSCARORA WAYNE MUTUAL I'

60-114.03-35
TUSCARORA MUTUAL INSURAN'

60-114
GAMBLE

60-114.03-42
WOODRUFF JANG

60-114.03-43
CASHIN JOAN L

60-114.03-37
TUSCARORA WAYNE MUTUAL I'

60-114.03-32
TUSCARORA WAYNE INSURANC'

FIFTH ST

60-114.03-45
SMALES ESTELLE

60-114.03-44
MILNE PATRONIA M

60-114.03-46
HERLT JUDY

60-114.03-31
TUSCARORA WAYNE MUTUAL I'

60-114.03-30
TUSCARORA WAYNE MUTUAL I'

60-114.03-47
BLEMLE BROOKS

60-114.03-56
TUSCARORA WAYNE INSURANC'

FOURTH ST - 950 FEET LONG

WALNUT ST - VACATED 2012

60-114.03-55
TUSCARORA WAYNE INSURANC'

32 FEET WIDE

CHESTNUT ST - TO BE VACATED - 830 FEET LONG
32 FEET WIDE

60-114.03-48
SHARER JEFFREY G

60-114.03-49
PRESTON MARY

60-114.03-50
MILARTA MICHAEL R

60-114.03-51
NORMAN RENEE MARIE

60-114.03-52
DIETZ MICHAEL W

60-114.03-54
TUSCARORA WAYNE INSURANC'

60-114.03-53
TUSCARORA WAYNE INSURANC'

60-114.03-59
SMITH JAMES A

60-114.03-59
HEEMAN SONYA D

60-114.03-60
HEEMAN GONYA

60-114.03-61
KELLY FRANCIS X

THIRD ST

60-114.03-18
BURNS PAMELA S

H HYNDSON WYLER
60-114.03-68

60-114.03-69
FRANKLIN RUTH MAE

60-114.03-68-1
BOROUGH OF WYALUSING

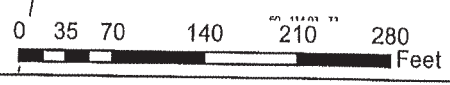
60-114.03-68
BOROUGH OF WYALUSING

60-114.03-67
WYALUSING CHRISTIAN
WILLIAMS VOLUNTEER

60-114.03-62
MARTINO MOST REVEREND JO'

60-114.03-17
WYALUSING MUNICIPAL AUTH'

60-114.03-71
HEEMAN JOHN JR



60-114.03-65
ST MARYS CHURCH OF THE A'

60-114.03-65
ST MARY OF THE ASSUMPTIO'

60-114.03-63
ST MARY OF THE ASSUMPTIO'

60-114.03-64
WILLIAMS RANDY B

61-115-182
PENNSYLVANIA LINES LLC

ROUTE 6

60-114.03-27
WYALUSING PARK & HOME SU'

60-114.03-69
YOUNG SSSONRE

STATE ST

60-114.03-68
ST MARYS CHURCH